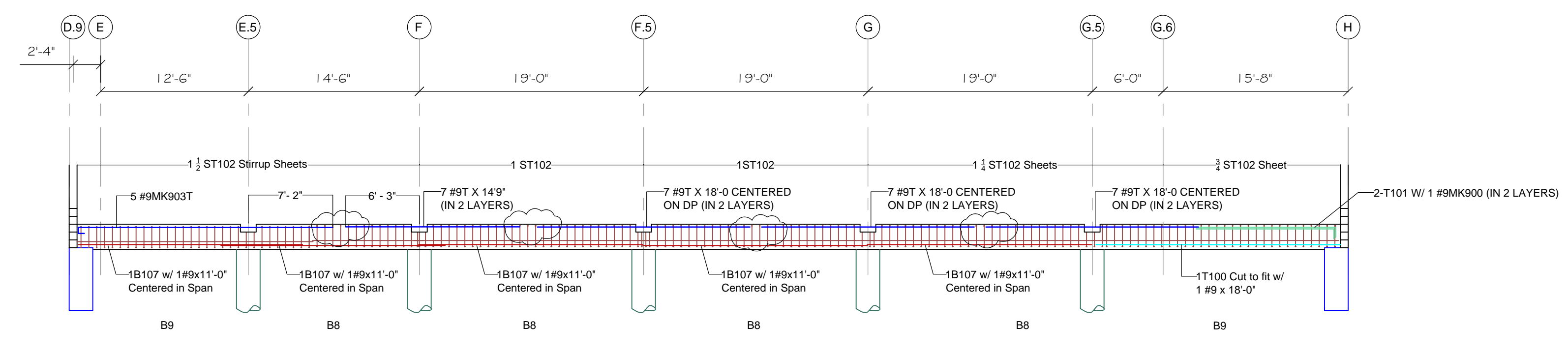
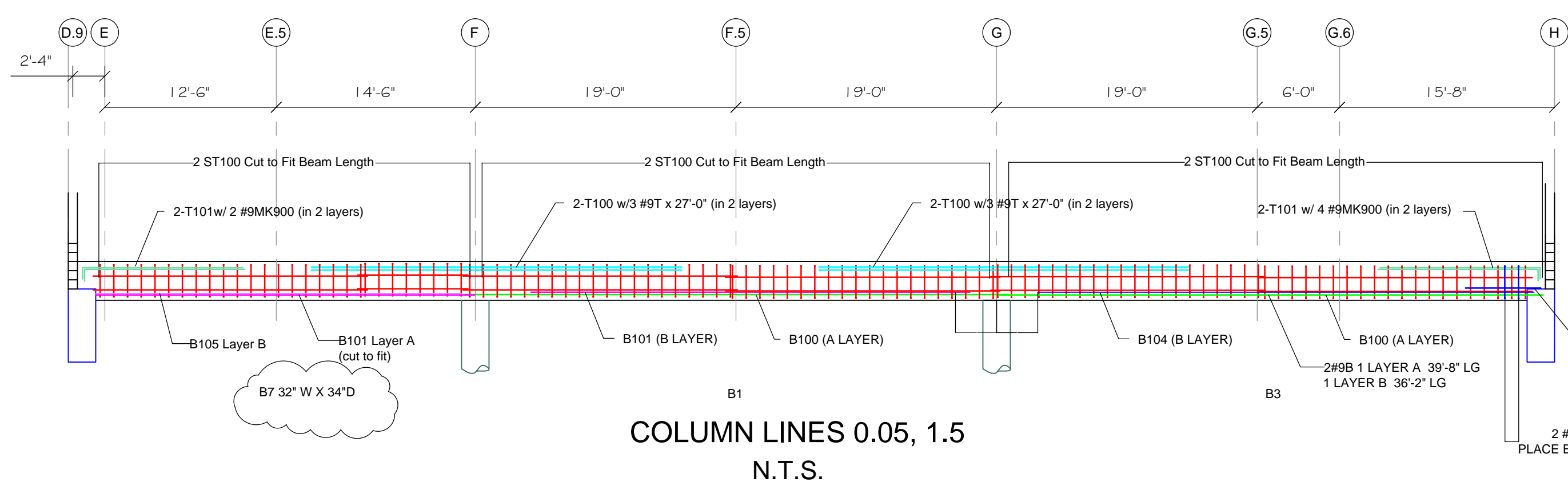


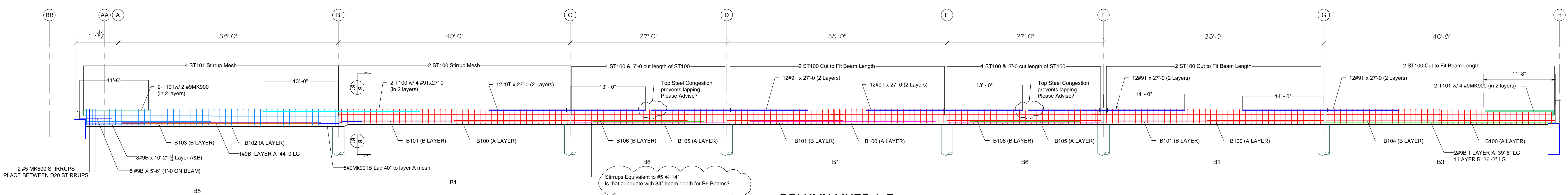
COLUMN LINES 1.1
N.T.S.



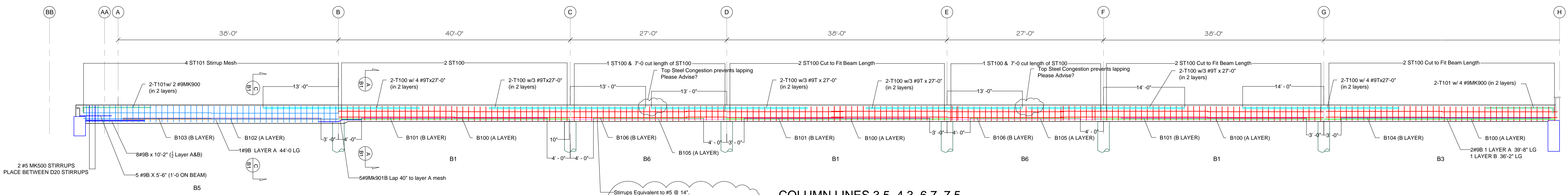
COLUMN LINES 0.1
N.T.S.



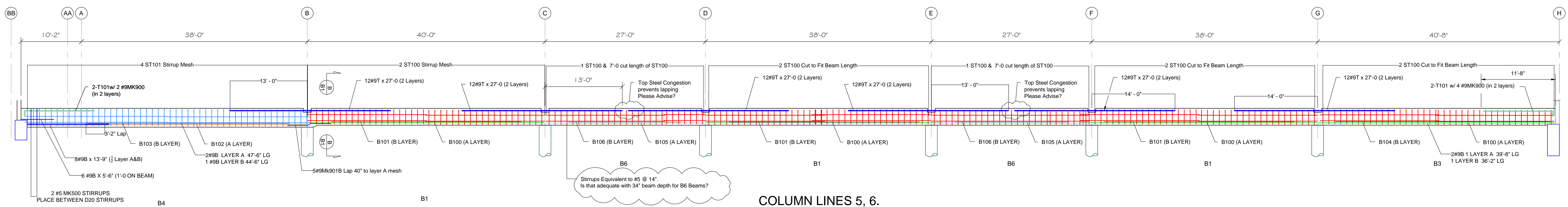
COLUMN LINES 0.05, 1.5
N.T.S.



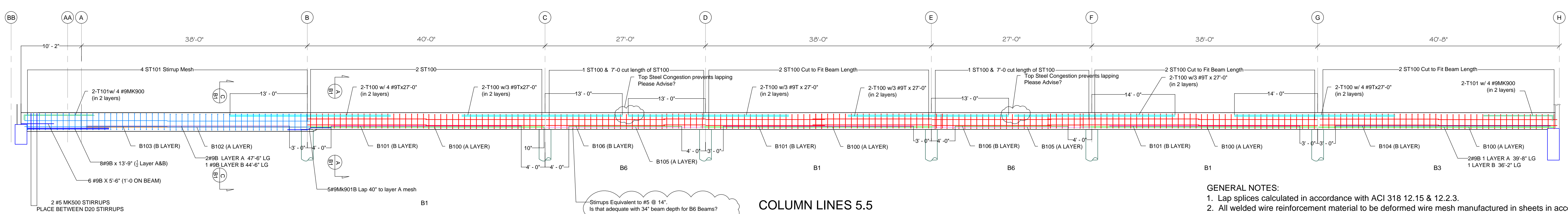
COLUMN LINES 4, 7
N.T.S.



COLUMN LINES 3.5, 4.3, 6.7, 7.5
N.T.S.



COLUMN LINES 5, 6
N.T.S.



COLUMN LINES 5.5
N.T.S.

GENERAL NOTES:
 1. Lap splices calculated in accordance with ACI 318 12.15 & 12.2.3.
 2. All welded wire reinforcement material to be deformed wire mesh manufactured in sheets in accordance with ASTM A1064.
 3. Cut wwr to fit at openings, penetrations and elevation changes if required.
 4. Fy = 80,000 psi @ 0.35% strain.

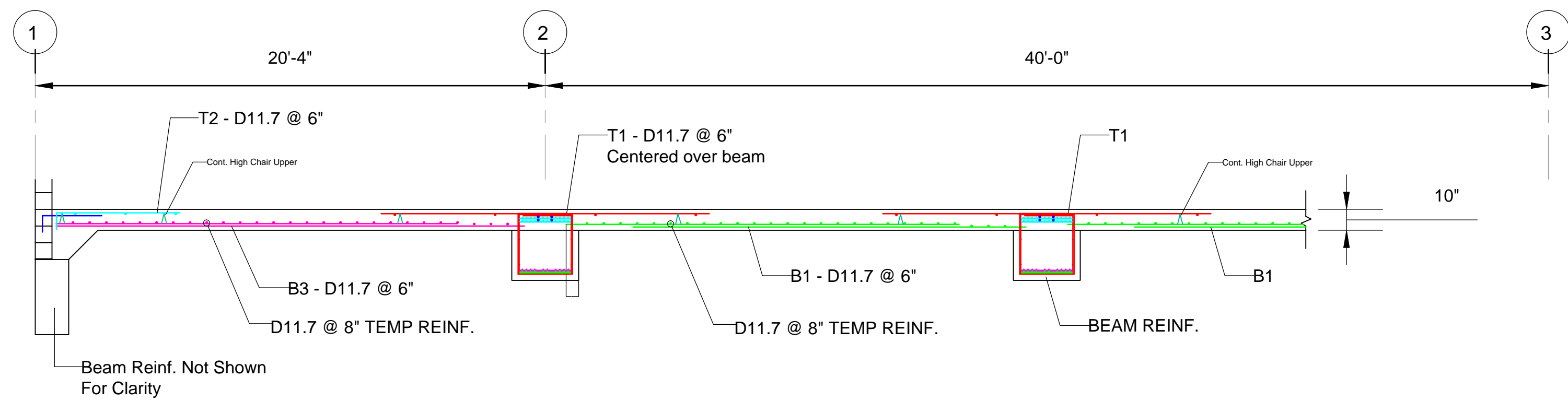
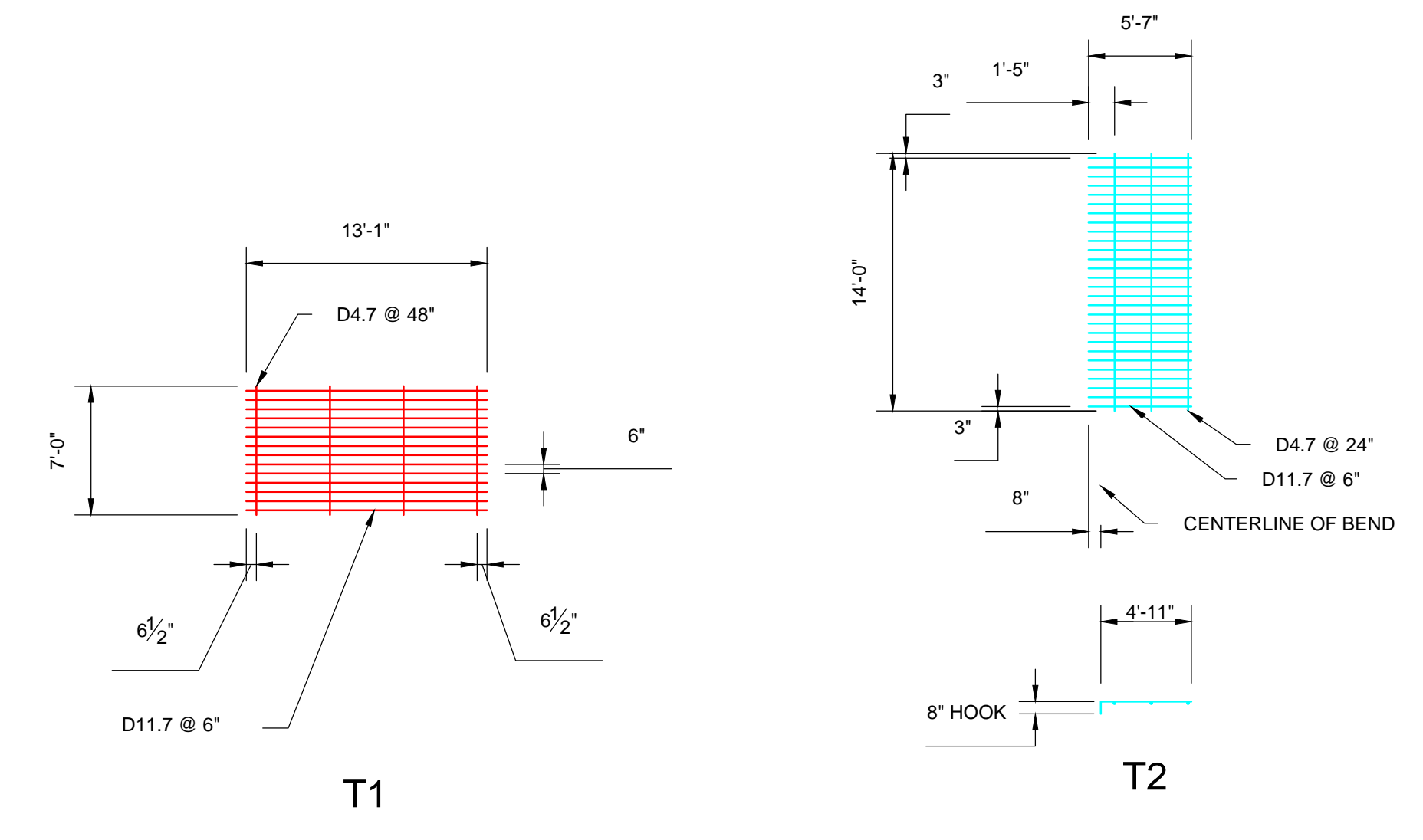
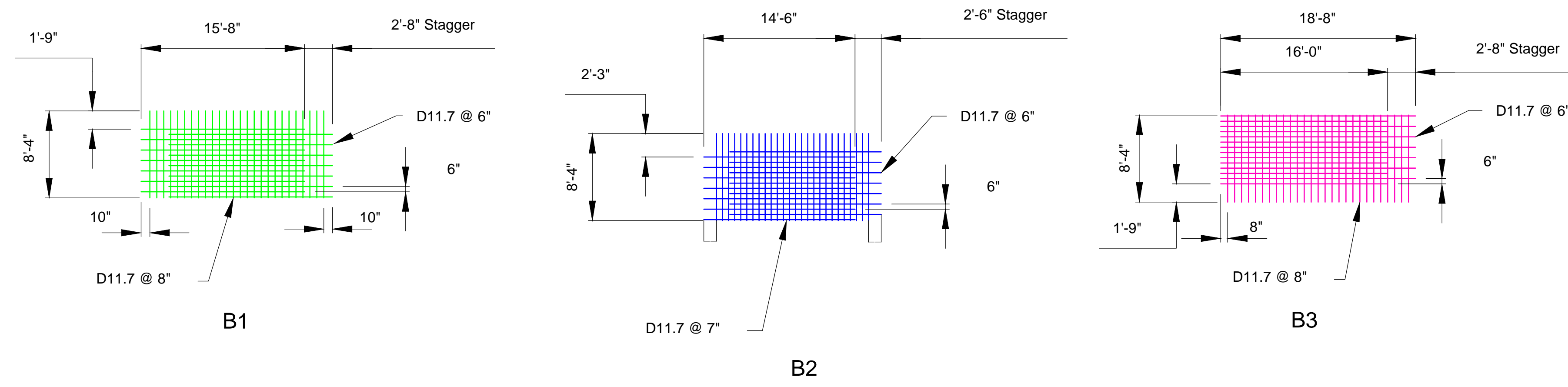
XXXX
XXXX
XXXX
XXXX
XXXX

XXXX
XXXX
XXXX
XXXX
XXXX

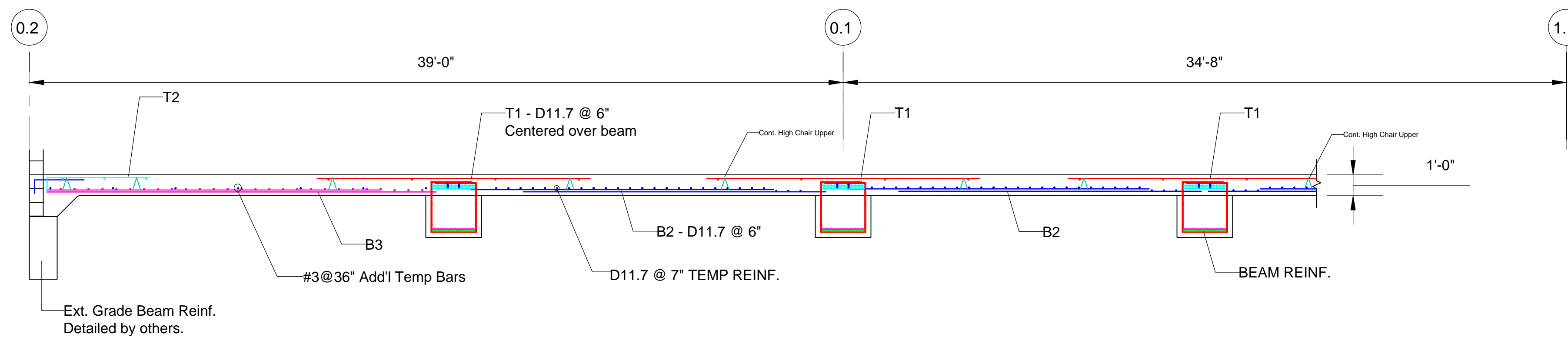
XXXX
XXXX
XXXX
XXXX
XXXX

NO.	DATE	DESCRIPTION

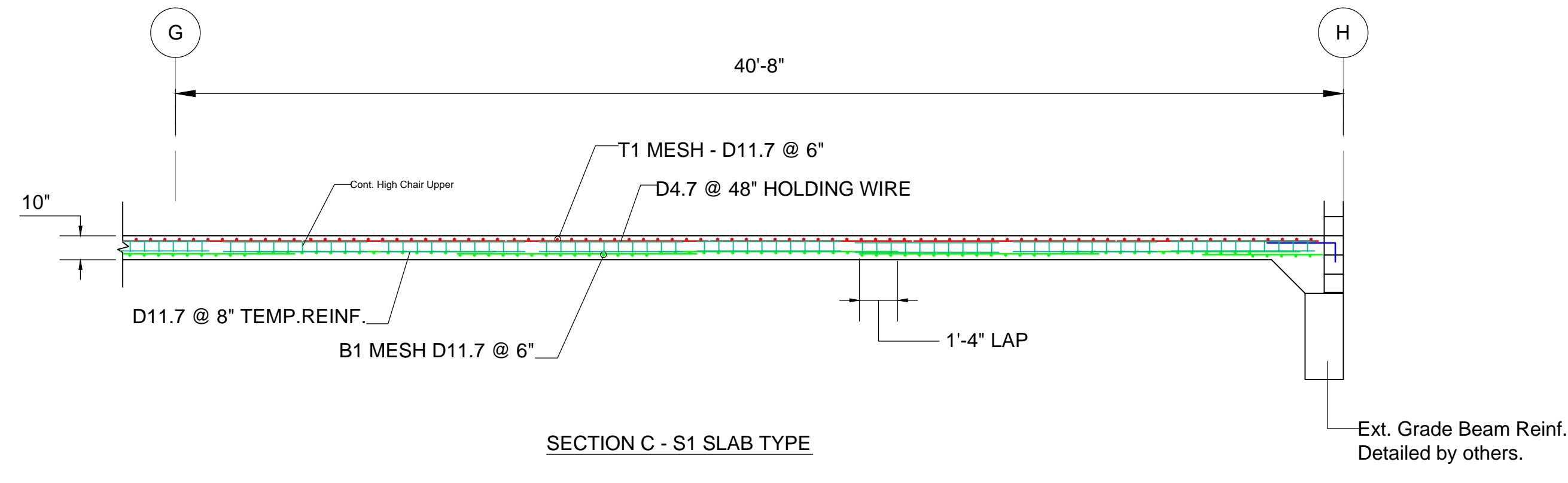
Printed No: 20XX-XXXX
 Scale: 1/4" = 1'-0"
 Drawn By: XXX
 Checked By: XXX
 Drawing No: B1



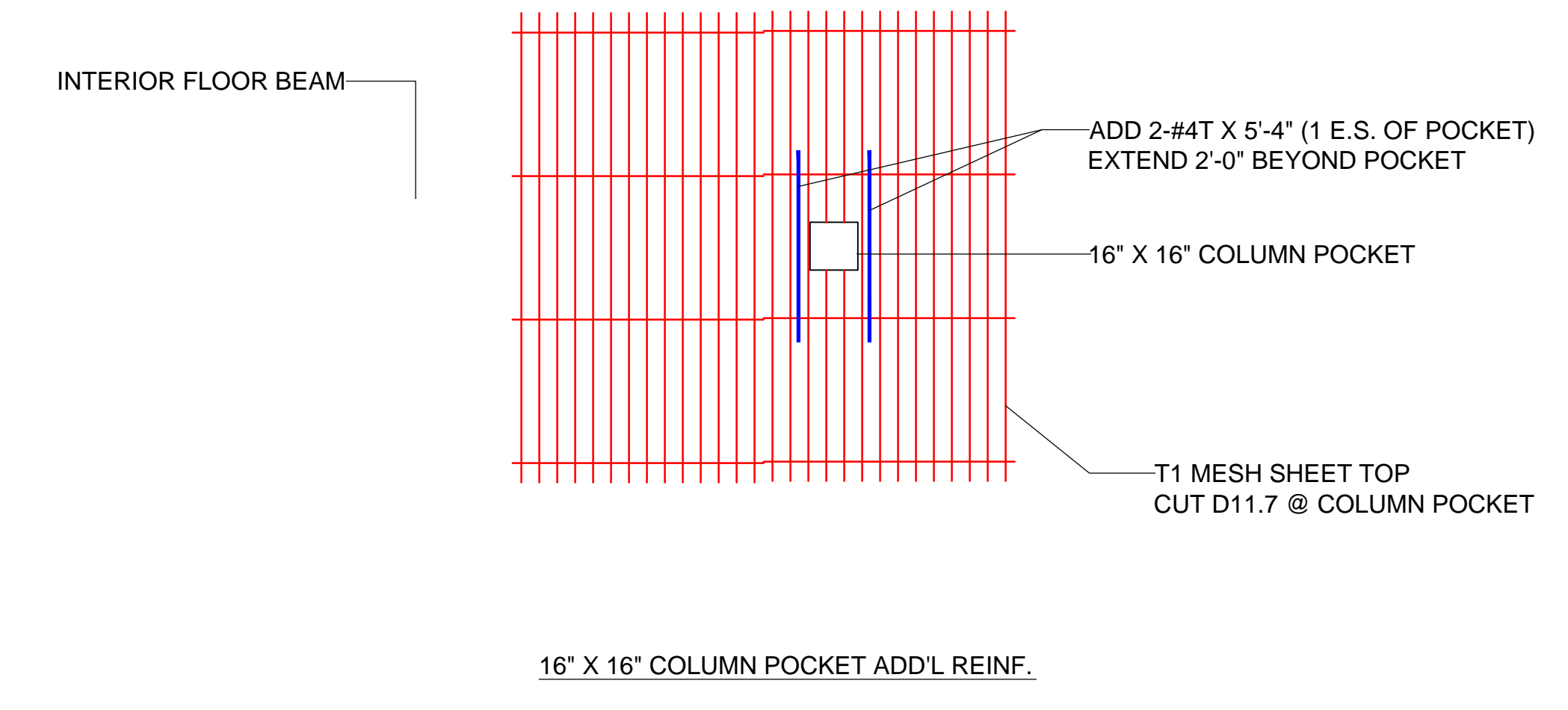
SECTION A - S1 SLAB TYPE



SECTION B - S2 SLAB TYPE



SECTION C - S1 SLAB TYPE



16" X 16" COLUMN POCKET ADD'L REINF.

XXXXX
XXXX
XXXX, XX XXXXX

XXXX
XXXX
XXXX, XX XXXXX

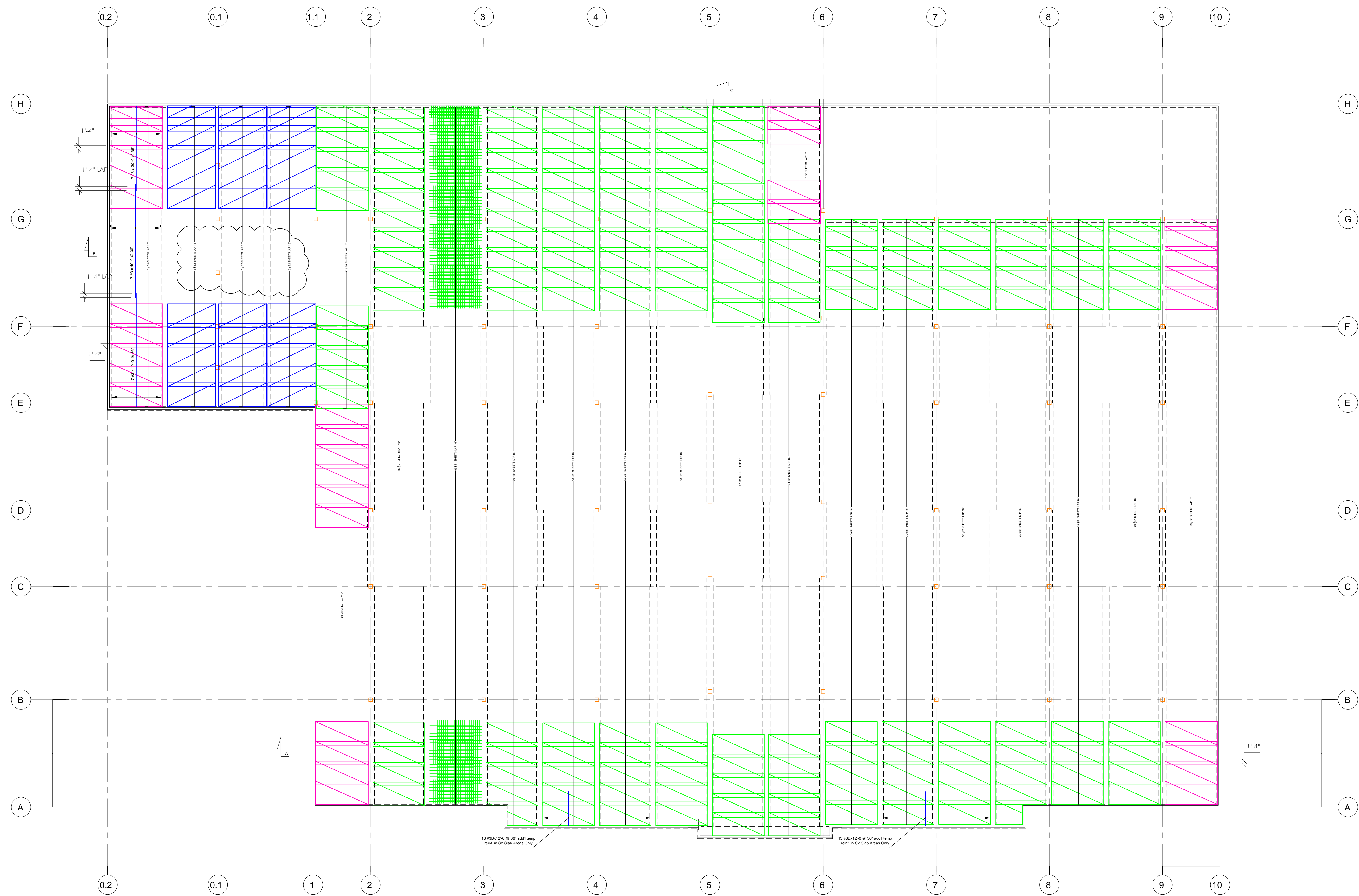
XXXX

NO.	DATE	DESCRIPTION
X	XXX, XX, 20XX	XXX

Project No. 20XX-XXXX	Scale XXX"=1'-0"
Drawn By XXX	Checked By XXX
Drawing No.	

D1

- GENERAL NOTES:**
- Lap splices calculated in accordance with ACI 318 12.15 & 12.2.3.
 - All welded wire reinforcement material to be deformed wire mesh manufactured in sheets in accordance with ASTM A1064.
 - Cut wwr to fit at openings, penetrations and elevation changes if required.
 - Fy = 80,000 psi @ 0.35% strain.



GENERAL NOTES:
 1. Lap splices calculated in accordance with ACI 318 12.15 & 12.2.3.
 2. All welded wire reinforcement material to be deformed wire mesh manufactured in sheets in accordance with ASTM A1064.
 3. Cut wwr to fit at openings, penetrations and elevation changes if required.
 4. $F_y = 80,000 \text{ psi} @ 0.35\% \text{ strain}$.

Client
 XXXXXX
 XXXX
 XXXX.XX.XXXXX

Project
 XXXX
 XXXX
 XXXXX
 XXXX.XX.XXXXX

Drawing Title
 XXXXX

DATE	DESCRIPTION
X XXX.XX.20XX	XXX

Project No.
 20XX-XXXX
 Scale
 XXX"=1'-0"
 Drawn By
 XXX
 Checked By
 XXX

Drawing No.
S1

XXXXXX
XXXX
XXXX XX XXXXX

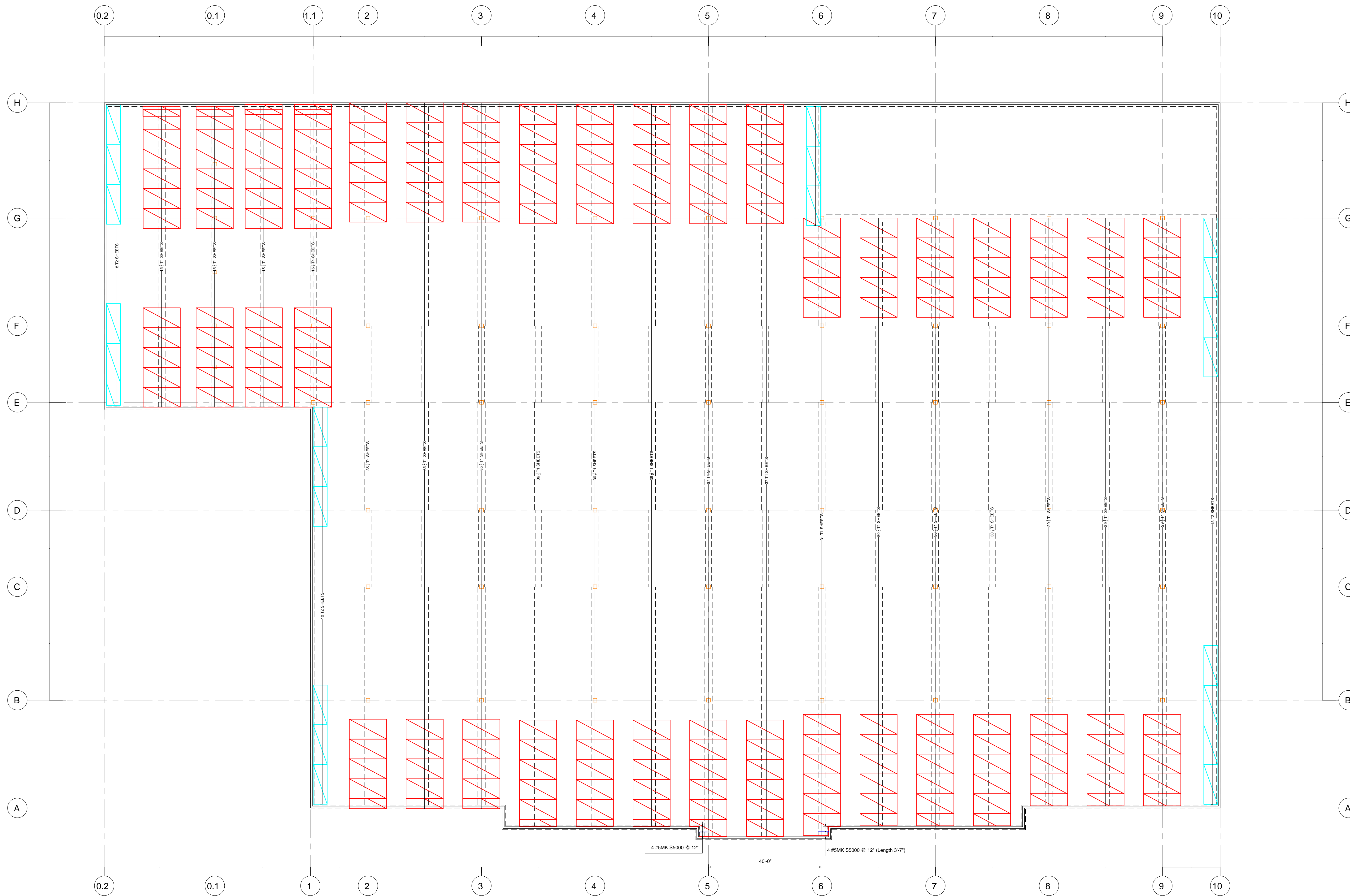
XXXX
XXXX
XXXX
XXXX XX XXXXX

XXXXX

DATE	DESCRIPTION
X .XX. XX, 20XX	XXX

Sheet No. 20XX-XXXX
Scale: 1/4" = 1'-0"
Drawn By: XXXX
Checked By: XXXX

S2



7" STD. 180 DEG. HK
#5MK S5000

- GENERAL NOTES:**
- Lap splices calculated in accordance with ACI 318 12.15 & 12.2.3.
 - All welded wire reinforcement material to be deformed wire mesh manufactured in sheets in accordance with ASTM A1064.
 - Cut wwr to fit at openings, penetrations and elevation changes if required.
 - Fy = 80,000 psi @ 0.35% strain.